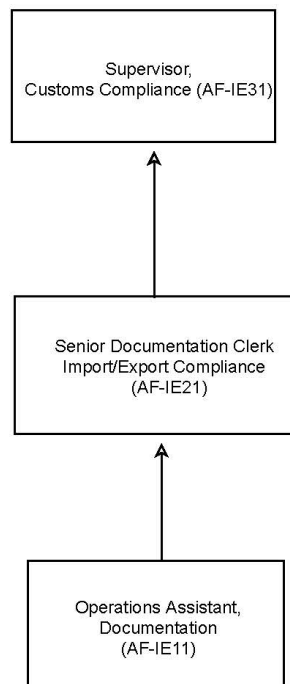


Progression Pathway for the Logistics Industry (Airfreight and Express)

Import/Export Documentation (IE)



Import/Export Documentation

Position	Supervisor, Customs Compliance (AF-IE31)			
Duties	<ul style="list-style-type: none"> • Ensure the import and export documents of the goods meet with the requirements of relevant laws and regulations • Master the changes in customs regulations • Reply to the Customs' inquiries • Carry out border customs clearance and check the classification made with the supervisor before completing the import declaration 			
	Core Competency		Code	Credit
	Handle procedures and documents for settlement of trading payment	LOCUIE201B	6	
	Verify required proofs and documents according to freight requirements	LOCUIE202B	6	
	Understand different trading modes and their requirements on import, export and re-export documents	LOCUIE301B	6	
	Implement boundary customs clearance	LOCUIE304B	3	
	Classify commodities for import/export and re-export	LOCUIE305B	3	
	Non-core Competency		Code	Credit
	Apply multimodal transport concepts and knowledge	111003L2	2	
	Total Credits		26	

Position	Senior Documentation Clerk, Import/Export Compliance (AF-IE21)																	
Duties	<ul style="list-style-type: none"> Handle import and export documents of various goods, such as dangerous goods, prohibited goods and dutiable goods 																	
	<table border="1"> <thead> <tr> <th>Core Competency</th> <th>Code</th> <th>Credit</th> </tr> </thead> <tbody> <tr> <td>Handle customs clearance procedures</td> <td>LOCUIE205B</td> <td>6</td> </tr> <tr> <td>Handle import/export or re-export documents</td> <td>LOCUIE206B</td> <td>3</td> </tr> <tr> <td>Compile air waybill</td> <td>LOAFIE202B</td> <td>3</td> </tr> </tbody> </table>			Core Competency	Code	Credit	Handle customs clearance procedures	LOCUIE205B	6	Handle import/export or re-export documents	LOCUIE206B	3	Compile air waybill	LOAFIE202B	3			
	Core Competency	Code	Credit															
	Handle customs clearance procedures	LOCUIE205B	6															
	Handle import/export or re-export documents	LOCUIE206B	3															
	Compile air waybill	LOAFIE202B	3															
	<table border="1"> <thead> <tr> <th>Non-core Competency</th> <th>Code</th> <th>Credit</th> </tr> </thead> <tbody> <tr> <td>Apply basic statistics to logistics operation</td> <td>111004L2</td> <td>3</td> </tr> <tr> <td>Conduct calculation of logistics related weights and measures, currencies and time zones</td> <td>LOCUCN203B</td> <td>3</td> </tr> <tr> <td>Handle the documents for DG (Dangerous Goods), prohibited goods and dutiable commodities</td> <td>LOCUIE203B</td> <td>6</td> </tr> <tr> <td colspan="2" style="text-align: right;">Total Credits</td> <td>24</td> </tr> </tbody> </table>			Non-core Competency	Code	Credit	Apply basic statistics to logistics operation	111004L2	3	Conduct calculation of logistics related weights and measures, currencies and time zones	LOCUCN203B	3	Handle the documents for DG (Dangerous Goods), prohibited goods and dutiable commodities	LOCUIE203B	6	Total Credits		24
	Non-core Competency	Code	Credit															
	Apply basic statistics to logistics operation	111004L2	3															
	Conduct calculation of logistics related weights and measures, currencies and time zones	LOCUCN203B	3															
	Handle the documents for DG (Dangerous Goods), prohibited goods and dutiable commodities	LOCUIE203B	6															
	Total Credits		24															

Position	Operations Assistant, Documentation (AF-IE11)																				
Duties	<ul style="list-style-type: none"> Handle import/export documents 																				
	<table border="1"> <thead> <tr> <th>Core Competency</th> <th>Code</th> <th>Credit</th> </tr> </thead> <tbody> <tr> <td>Handle import/export or re-export documents</td> <td>LOCUIE206B</td> <td>3</td> </tr> <tr> <td>Arrange for customs declaration</td> <td>LOCUIE204B</td> <td>3</td> </tr> <tr> <td>Know the label, marking, types and basic packaging requirements for air cargo</td> <td>111001L1</td> <td>2</td> </tr> <tr> <td>Use air freight terms, codes and abbreviations</td> <td>111000L1</td> <td>2</td> </tr> <tr> <td colspan="2" style="text-align: right;">Total Credits</td> <td>10</td> </tr> </tbody> </table>			Core Competency	Code	Credit	Handle import/export or re-export documents	LOCUIE206B	3	Arrange for customs declaration	LOCUIE204B	3	Know the label, marking, types and basic packaging requirements for air cargo	111001L1	2	Use air freight terms, codes and abbreviations	111000L1	2	Total Credits		10
	Core Competency	Code	Credit																		
	Handle import/export or re-export documents	LOCUIE206B	3																		
	Arrange for customs declaration	LOCUIE204B	3																		
	Know the label, marking, types and basic packaging requirements for air cargo	111001L1	2																		
	Use air freight terms, codes and abbreviations	111000L1	2																		
Total Credits		10																			